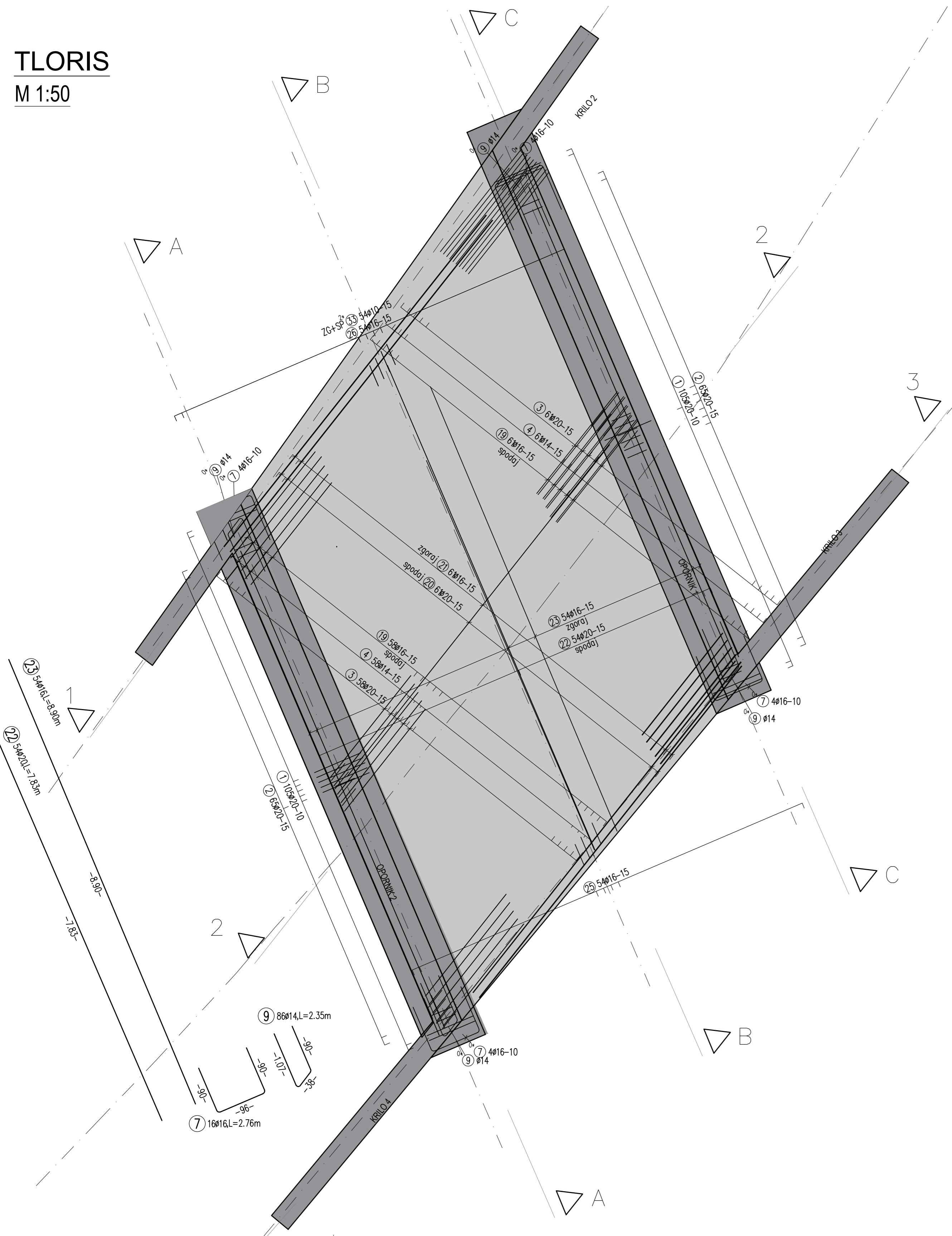
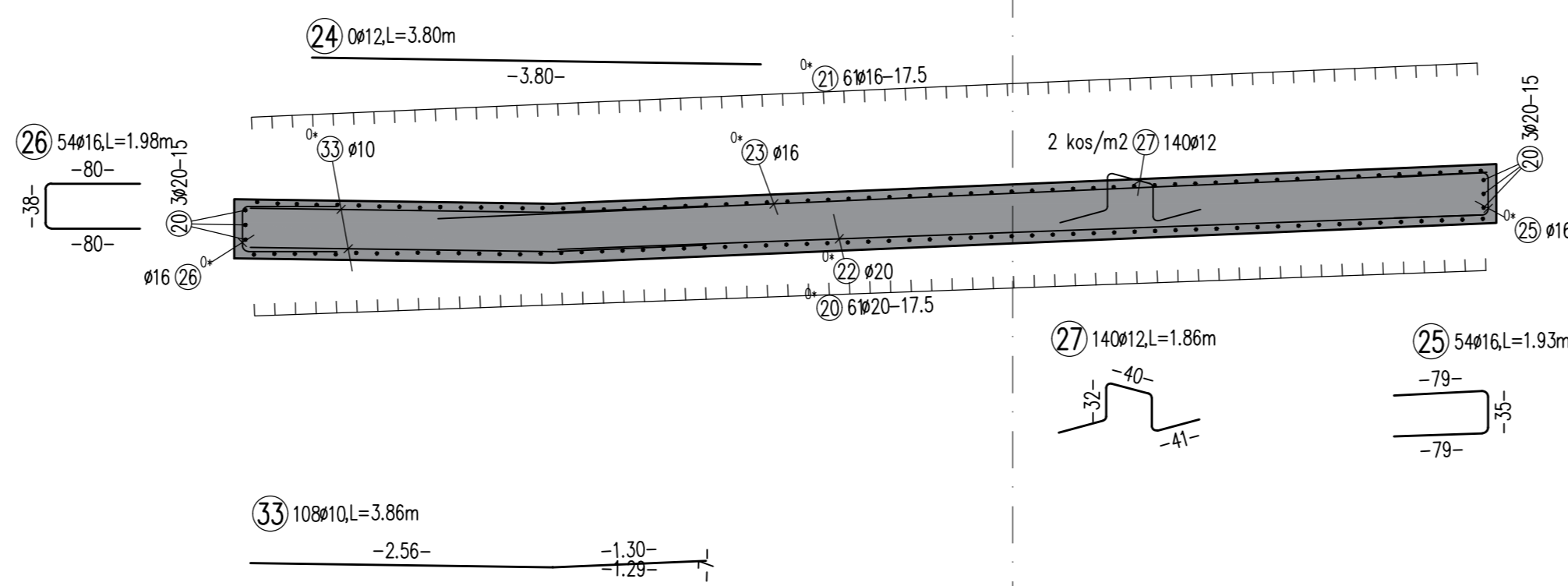


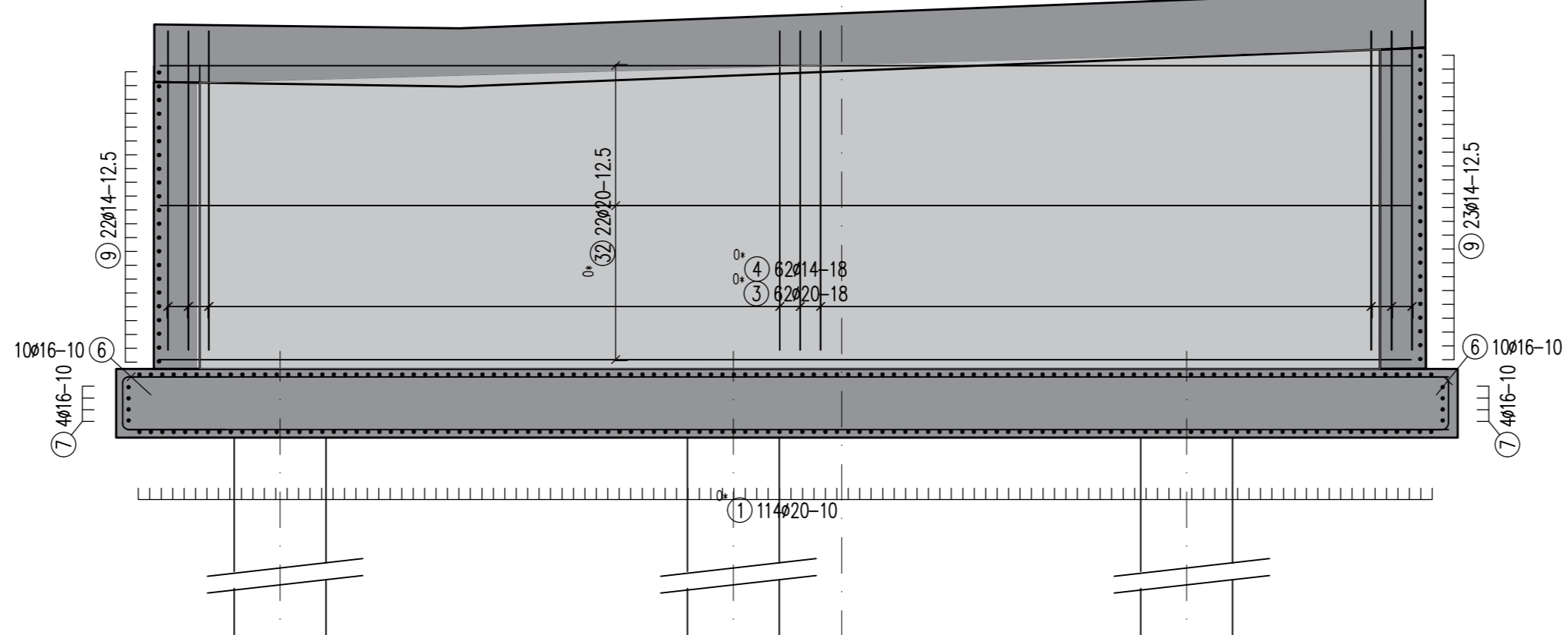
TLORIS
M 1:50



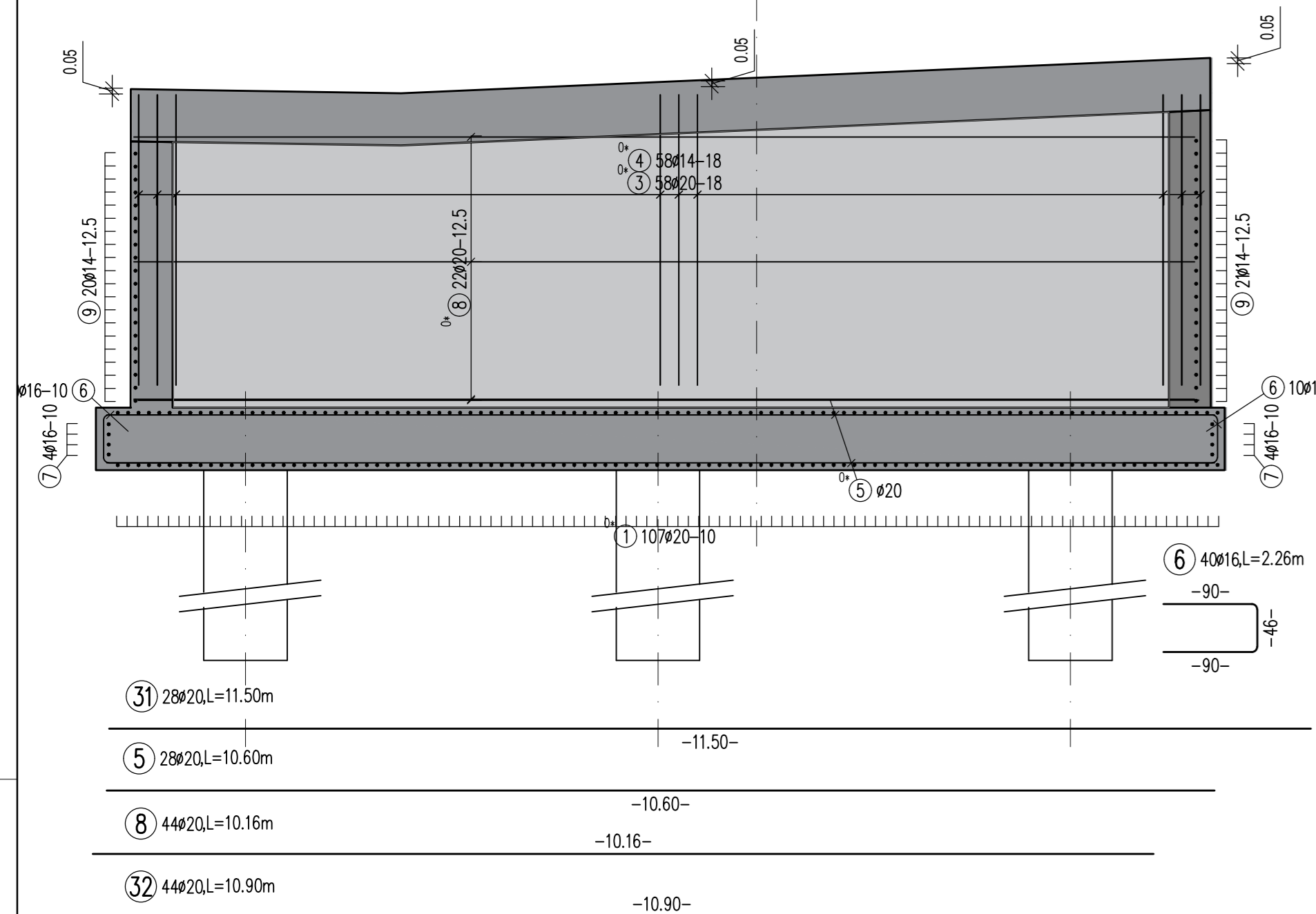
PREREZ B-B
M 1:50



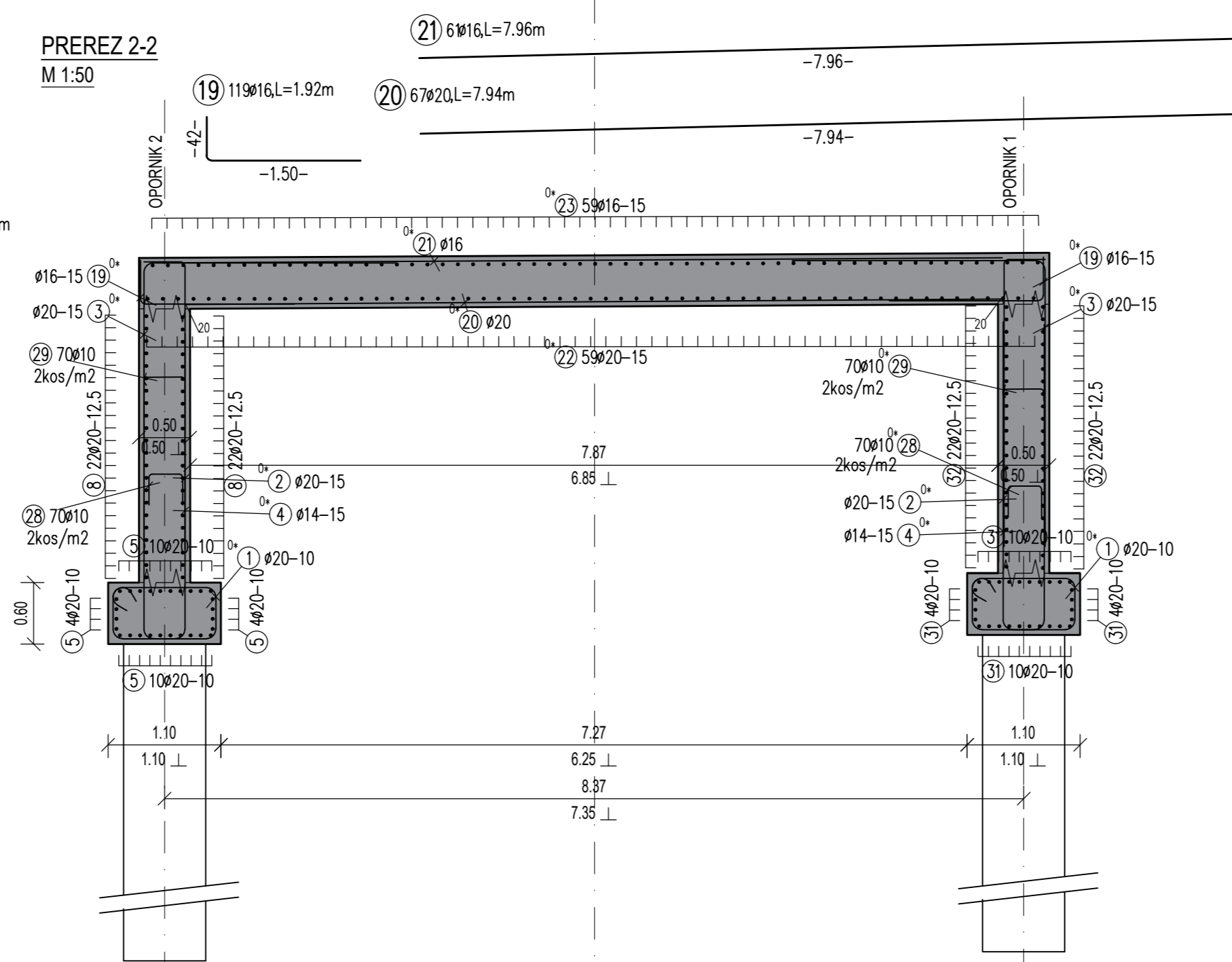
PREREZ C-C - Opornik 1
M 1:50



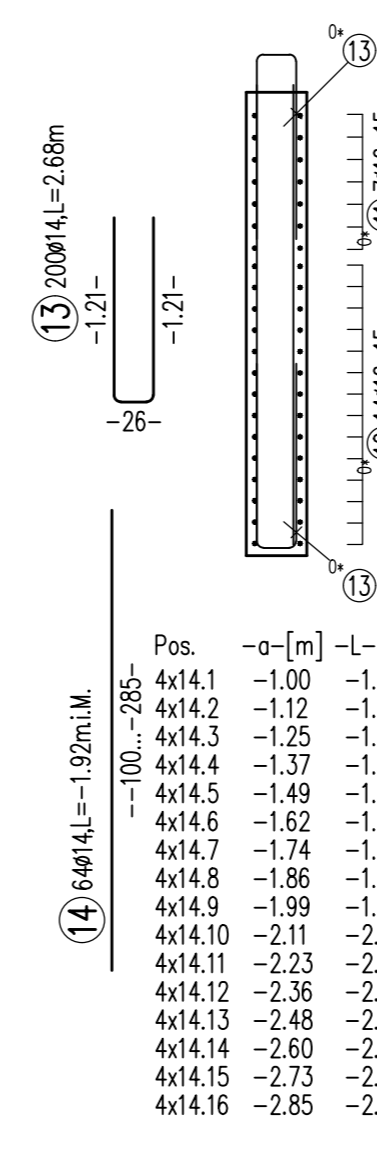
PREREZ A-A - opornik 2
M 1:50



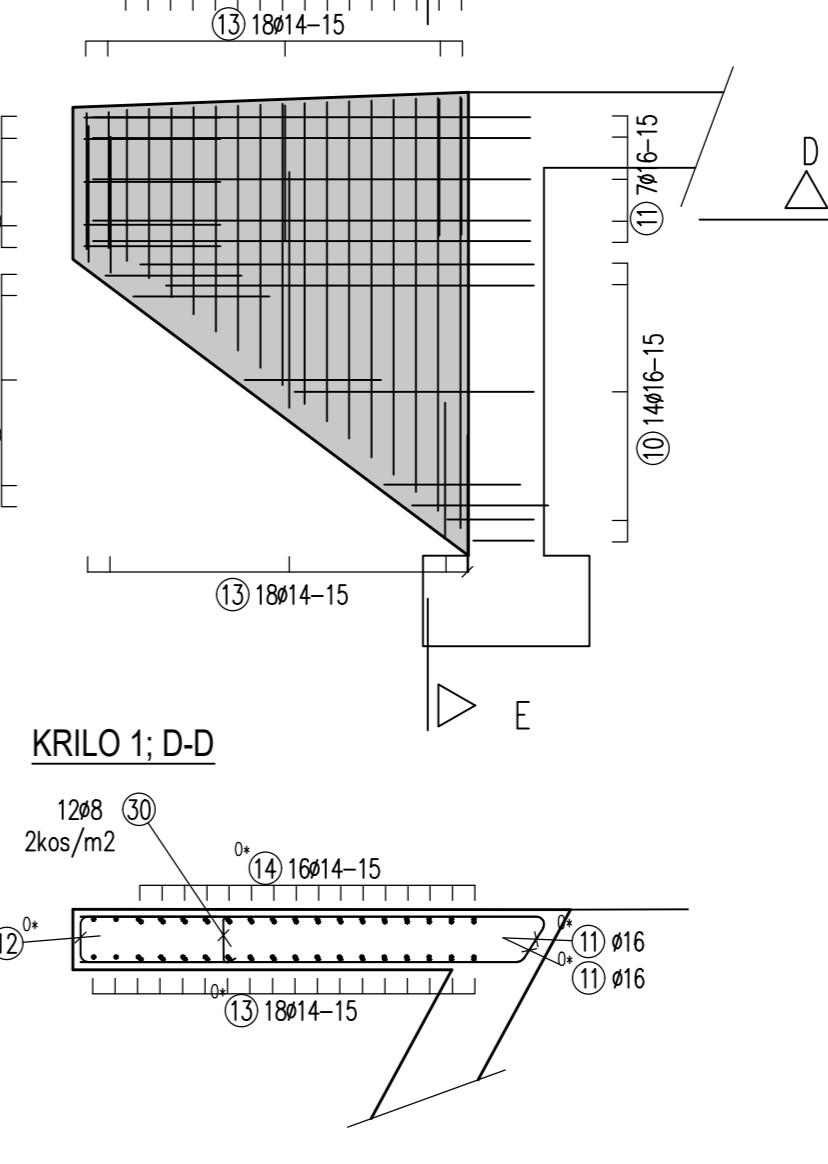
PREREZ 2-2
M 1:50



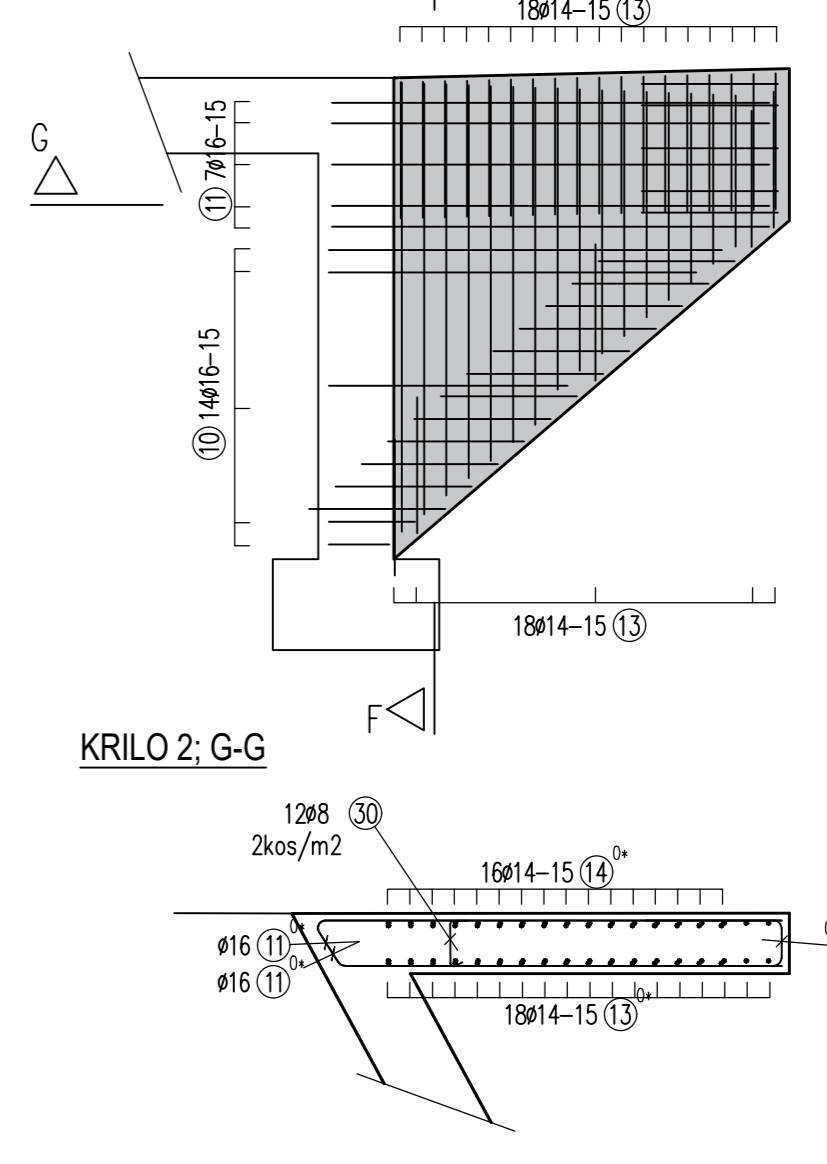
KRILO 1: E-E



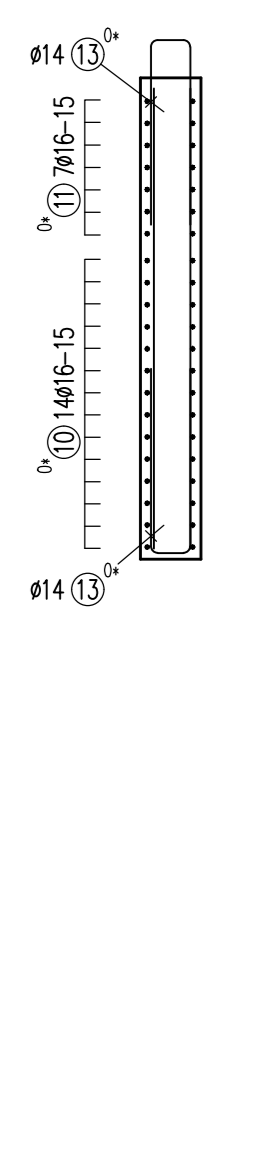
KRILO 1
M 1:50



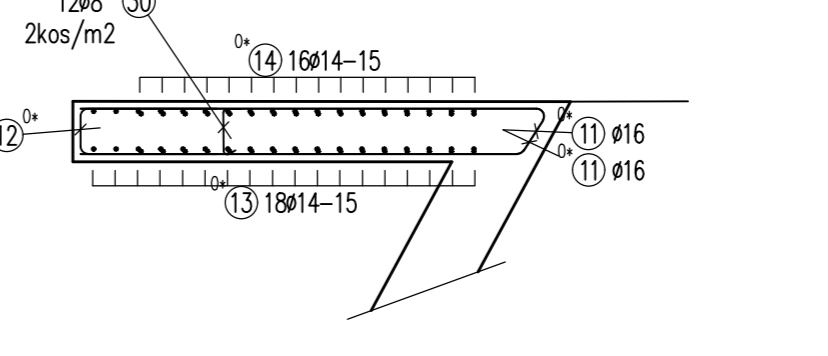
KRILO 2
M 1:50



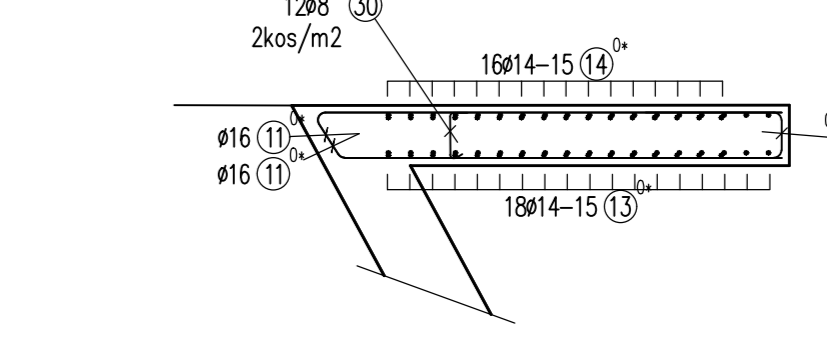
KRILO 2 F-F



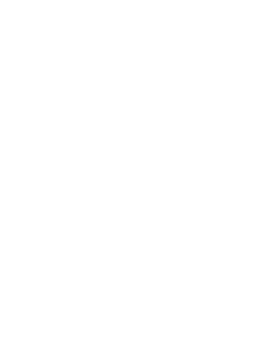
KRILO 1: D-D



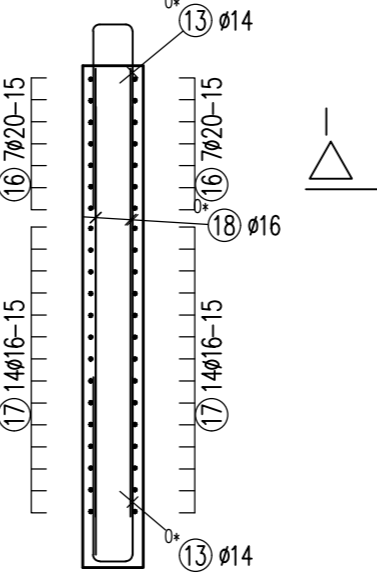
KRILO 2: G-G



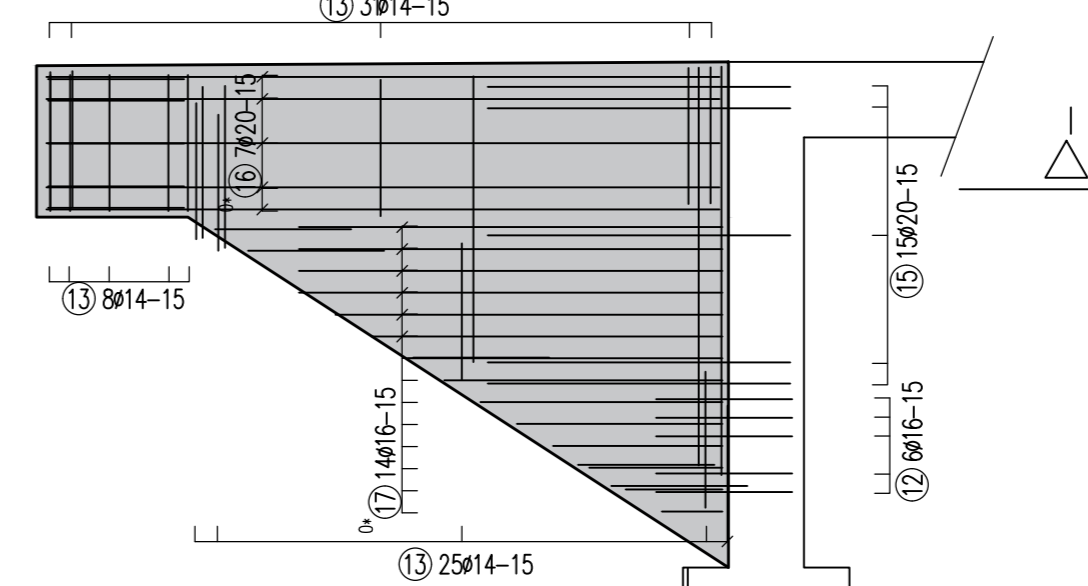
KRILO 2 F-F



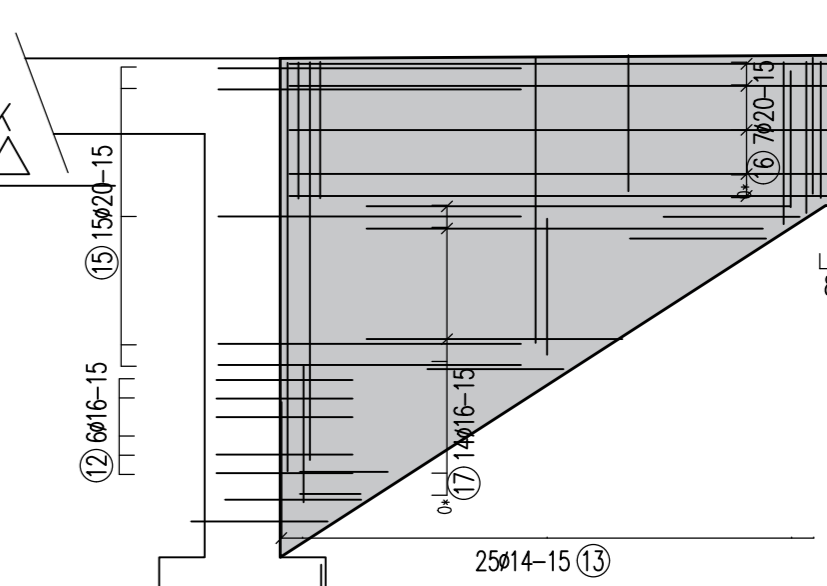
KRILO 4: H-H



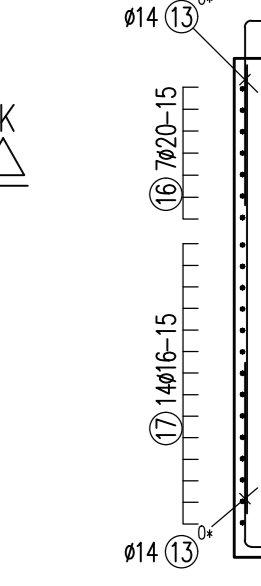
KRILO 4
M 1:50



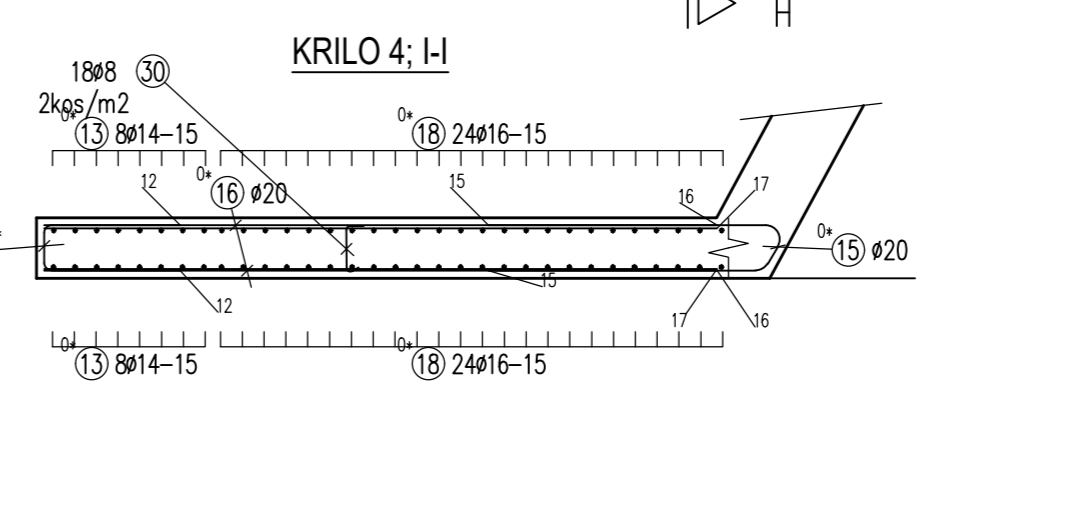
KRILO 3
M 1:50



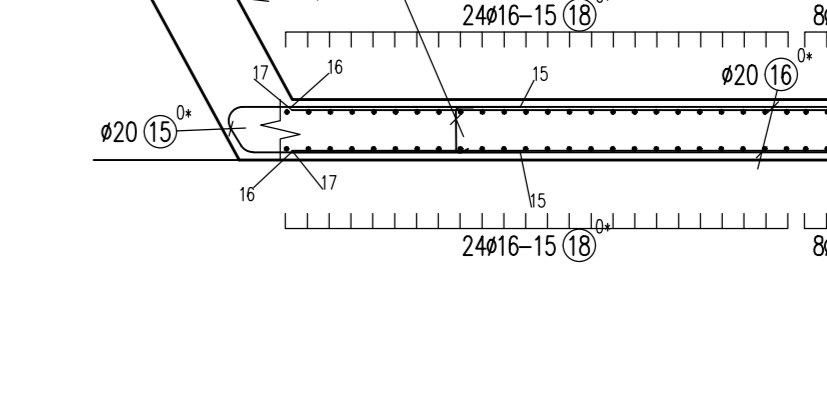
KRILO 3: J-J



KRILO 4: I-I

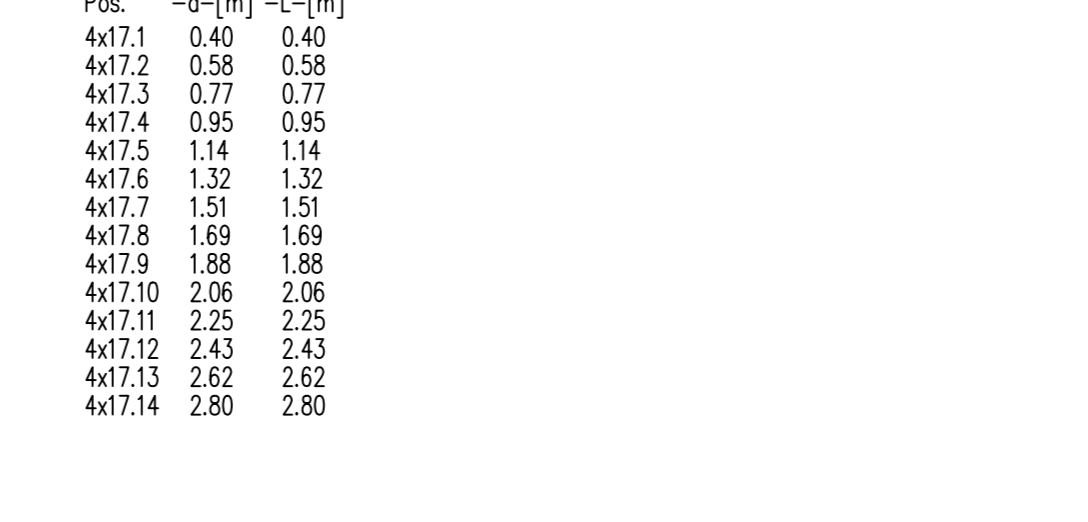


KRILO 3: K-K



Pos.	-o-[m]	-L-[m]
4x18.1	-1.00	-1.00
4x18.2	-1.07	-1.07
4x18.3	-1.15	-1.15
4x18.4	-1.22	-1.22
4x18.5	-1.30	-1.30
4x18.6	-1.37	-1.37
4x18.7	-1.44	-1.44
4x18.8	-1.52	-1.52
4x18.9	-1.59	-1.59
4x18.10	-1.67	-1.67
4x18.11	-1.74	-1.74
4x18.12	-1.81	-1.81
4x18.13	-1.89	-1.89
4x18.14	-1.96	-1.96
4x18.15	-2.03	-2.03
4x18.16	-2.11	-2.11
4x18.17	-2.18	-2.18
4x18.18	-2.26	-2.26
4x18.19	-2.33	-2.33
4x18.20	-2.40	-2.40
4x18.21	-2.48	-2.48
4x18.22	-2.55	-2.55
4x18.23	-2.63	-2.63
4x18.24	-2.70	-2.70

KRILO 3: L-L



Pos.	-o-[m]	-L-[m]
4x17.1	0.40	0.40
4x17.2	0.58	0.58
4x17.3	0.77	0.77
4x17.4	0.95	0.95
4x17.5	1.14	1.14
4x17.6	1.32	1.32
4x17.7	1.51	1.51
4x17.8	1.69	1.69
4x17.9	1.88	1.88
4x17.10	2.06	2.06
4x17.11	2.25	2.25
4x17.12	2.43	2.43
4x17.13	2.62	2.62
4x17.14	2.80	2.80

BAR	SCHEMULE Steelgrade		B500B									
	No.	d	Length	D8	D10	D12	D16	D20				
1	210	20	3.46					726.60				
2	130	20	6.35					825.50				
3	119	20	5.24					623.56				
4	119	14	3.16					296.80				
5	28	20	10.60									
6	40	16	2.26									
7	16	16	2.76									
8	44	20	10.16					447.04				
9	86	14	2.35									
10	28	16	3.274									
11	14	16	6.28									
12	52	16	2.10									
13	200	14	2.68									
14	64	14	-1.92*				536.00					
15	30	20	4.01					120.30				
16	28	20	4.45					124.60				
17	56	16	1.60*					89.60				
18	96	16	-1.854*					-177.60				
19	119	16	1.92*					228.48				
20	67	20	7.94					531.98				
21	61	16	7.96									
22	54	20	7.83					485.56				
23	54	16	8.90					480.60				
24	0	12	3.60			0.00						
25	54	16	1.93					104.22				
26	54	16	1.98					106.92				
27	140	12	1.86									
28	70	10	0.92			64.40						
29	70	10	0.56			39.20						
30	6.0	8	0.48	28.80								
31	28	20	11.50					322.00				
32	44	20	10.90					479.60				
33	108	10	3.86									
* = in average												
Total lengths												
kg / m	D8	0.395	D10	0.617	D12	0.888	D14	1.210	D16	1.580	D20	2.470
kg / d		11.376		321.136		231.235		1202.304		2883.532		12154.376
Total weight (kg)									16803.959			

MOST pri Strišu

Beton:

KONSTRUKCIJSKI ELEMENIT	TRONKSTNI RAZRED	STOPANJA IZPOSTAVLENOSTI	ZASTIJNI SLOJ
termeji	C 25/30	X/2 P/II v/c 0.45 SA O 0.2 Dmax16	C nom. 5.0cm
oklajene	C 30/37	X/4 X/3 P/IV v/c 0.45 SA O 0.2 Dmax16	C nom. 5.0cm
plaka	C 30/37	X/4 X/3 P/IV v/c 0.45 SA O 0.2 Dmax16	C nom. 5.0cm
rošči vrtne	C 30/37	X/4 X/4 P/IV v/c 0.45 SA O 0.2 Dmax16	C nom. 5.0cm

LASTNOSTI BRUKULJE S BET EN 126-12013 S BET EN 120-2016 S BET EN 1207-2014/EN 1210

LASTNOSTI BRUKULJE S BET EN 1000-2005

Armatura - B500 (B) palice

Vse mere je potrebno preveriti na mestu sameti!

Ime in priimek	Ime in priimek	Ime in priimek	Ime in priimek

Ime in priimek	Ime in priimek	Ime in priimek	Ime in priimek

Ime in priimek	Ime in priimek	Ime in priimek	Ime in priimek